

Silkstone Parish Newsletter Winter 2024 Issue 104



A selection of contents

Addergram	8
Silkstone Parish - Then and Now	13
Gardening with Matt B	17
Local walk pullout	19
Could you be a councillor?	24
Parish Council contact details	27-28
Local Organisations	36-40



Old Silkstone Band in Meadowhall for Christmas

The Editor of this Newsletter is Sue Williams. Views expressed in in this Newsletter are those of the Contributors and not necessarily the views of the Parish Council.

See more on page 5

A Word from the Chair

I would like to start by thanking everyone in the parish, who help keep the two villages looking so smart. The CARE Group who can be seen most weekends working away. The village handyman, Stewart Walton, the work he does behind the scenes, for example the benches, he is methodically working his way through them all repairing, renovating and painting wherever is required. Councillor Leech, who litter picks most mornings on the carpark and MUGA around the Huskar Rooms and last, but definitely not least, all the unsung heroes the do their bit to keep our two villages in my opinion the best place to live in Barnsley.

If anyone would like to become more involved in the villages, volunteers are always welcome. Currently the team running the Huskar Rooms would like someone to volunteer as Chair for the committee, if you don't feel that's for you, new committee members are also welcome, please consider as your help will be really appreciated.

Finally, this is the last newsletter before Christmas and New Year so from myself and the Parish Council I would like to wish everyone a very Happy Christmas and a Healthy New Year.

Meryl

Chair Silkstone Parish Council

The front page image in this issue was taken by Diane Batty. Last month's image was by Rebecca Saxton. My apologies for missing the acknowledgement last time. Linda Marsh

Silkstone Warm Welcome

Warm welcome, warm drinks, warm friendship

December 10 & 17

January 7th and 21st

February 4th and 18th

March 4th and 18th

April 1st, 15th and 29th

Huskar Community Rooms - 10.00am -12.30pm

Join us for drinks, biscuits, and a chat. For more information contact:

Richard 07966 466507, Julia 07941 527250 or Alan 07870 191873

Editorial

Welcome to the Winter Issue of the Silkstone Parish Newsletter.

I hope this Newsletter finds you well, and warm.

It is here again, that time where we start wearing socks and jumpers, big coats and hats. I am not a lover of socks or hats, but when the wind blows!

I visited the Wonderful Yorkshire Craft Fair at All Saints Church and was blown away by the craftsmanship..... and the Christmassy feel! Well done to all those who organised and took part in the fair.

This issue includes articles from 'our MattB' around the preparations for your garden for the coming Winter months, a 'now and then' set of photos from the Silkstone Heritage Group, another great Walk around our Parish from the CARE group, and an update from Liz about the arrangements and positives about our Twinning visit in 2025.

The Old Silkstone Band have shared the dates and venues where they will be performing.

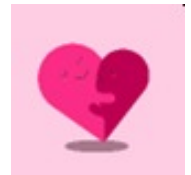
There are dates for Panto's in the Town (oh no there's not.... ☺), and events in Barnsley Town centre - all going up to Christmas. Mick has sent us his December 'Adergram', always a brain teaser - and of course we have the humourous 'ramblings' of our Canon Keith.

I am writing this Editorial at the beginning of November, so this does feel a little strange, but I wish you all a

Merry Christmas, Happy Holidays, and good health, wealth and happiness for 2025!

***Sue Williams
Editor***

PS Please watch over your neighbours in these chilly times..... thank you



Teresa Owens Reflexology

a complementary therapy



Some of the benefits:

- Relieves anxiety, stress and tension;
- Improves blood and nerve supply, helping to unblock nerve impulses;
- Helps the body achieve homeostatis (balance) improving wellbeing.

Prices:

Individual session	£45.00
Block of 4 subject to availability (terms & conditions apply)	£160.00
Gift vouchers available	

Some private healthcare plans offer payment towards Reflexology treatments





TERESA OWENS IIR (Dip) MAR Silkstone Common, South Yorkshire
 Tel: 01226 790087 / 07712 233611 teresaowensuk@gmail.com





**KEEP YOU AND YOUR LOVED ONES
SAFE AND HAPPY AT HOME WITH
AWARD WINNING CARE**

"The time we spend with mum is now fun time. It has taken the pressure off all of us. Now we can enjoy our time together."

Mrs L, from Silkstone

To us, it's personal®

Call us on T: 01226 391010
www.homeinstead.co.uk/barnsley

Old Silkstone Band Update

We can't believe that we are through Summer and we are now tracking towards the most wonderful time of the year....Christmas.

Christmas is one of the band's busiest periods of the year but it also one of the most enjoyable. We spend a lot of time out and about bringing festive cheer by playing our Christmas music.

"There is something about hearing a brass band at Christmas that is just wonderful,"
"It is lovely hearing you play, it reminds me of....". These are just a few of the many wonderful comments we get from people passing by and stopping to listen to us, and this means a lot to us. We are musicians and what seems a little bit everyday to us really does make a positive difference and brings a special feeling to so many people. That is why we love it.

Here is where you can find us leading up to Christmas

17th November – Yummy Yorkshire

1st December – Yummy Yorkshire

5th December – Silkstone Common School

14th December – Headon Church, Retford

19th December – Dodworth Tap

20th December – Silkstone Church

We will also be doing some Christmas carolling at Meadowhall again this year, we will be there on various dates, look out for us!

Christmas would not be complete without our Christmas Carol Walkarounds, around the Silkstone Parish. We will be out on the following dates

15th December – Silkstone Common

22nd December – Silkstone Village

We would like to thank you all for your support as always, and we look forward to seeing you soon.

Danni

Secretary – Old Silkstone Band



Silkstone – St Florent Twinning Association

Little update to report from the last Parish Newsletter article. At present arrangements are still provisional and exact dates(2nd week of July 2025), numbers of visitors, method of travel (coach or flight) etc are yet to be confirmed.

At this stage our efforts are directed towards obtaining offers of accommodation for any guests. As mentioned previously we anticipate between 24 & 30 visitors, including 10 to 12 young people who are supervised by a couple of youth workers. We have offers of accommodation for 16 visitors at this time; are well short of that required.

Many people have been involved in twinning over its 30+ years of existence. Can you identify anyone in the photos from the inaugural celebrations?



Please contact me if you are able to provide accommodation – email:

liz.waterlow@outlook.com

Our family have been involved with the Twinning from the beginning – 1991, and our son is depicted on the official Twinning plate – leading the procession through St. Florent on the official Twinning Ceremony.



We have made many good friends since that time and have wonderful memories of our visits to St. Florent.

Please do not think that language is a barrier – especially with modern technology (translation at the touch of a button!).



The aim of the Twinning is to provide people with an insight into the lives of our different cultures and hopefully to accept our differences and build on moving forward to a better understanding of each other.

The most important thing we can give in a Twinning visit is a bed for our visitors. Even if you are a working family, arrangements can be made for your visitors to go to someone else's home for breakfast. (in the past we have had up to 12 for breakfast!). The days are filled with activities and visits – Some of which you can participate in if you so wish. You may be required to provide a pic-nic or an occasional evening meal for your guests, but usually a few families get together for the evening meal so that there is a mix of French and English, which makes for a more relaxing evening.

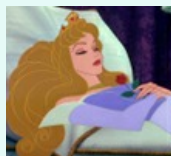


The visit usually concludes with an official dinner at which it is hoped everyone will attend. Speeches and gifts are exchanged and much wine is consumed. It's amazing how much better we can speak the language!

Participating in the Twinning visits is a truly rewarding experience so please let Liz know if you are willing to host because without you, the visit cannot take place.

Yvonne Dinsdale

Panto Time



Sleeping Beauty - The
Lamproom Theatre
Barnsley

7 December 2024 to 4 January 2025

Box office: 01226-200075

On line: barnsleylamproom.com

Lamproom 01226 200075

<https://barnsleylamproom.com>



Jack and the Beanstalk
Civic Theatre Barnsley

7 to 28 December

Box Office: 01226 32700

enquiries@barnsleycivic.co.uk



Jack and the Beanstalk
The Academy Theatre
Birdwell 1 to 31
December

Box Office: 01226
7444442

Email: julie@academytheatre.uk

Christmas Fair
Sunday 15th December
10:00 till 16:00 (free entry)
Silkstone Golf Club
Elmhirst Lane S75 4LD

Woodland Driving School

Driving instructor based in Silkstone Common offering affordable lessons throughout the Barnsley area.

Achieve your goal of passing your test and becoming a safe and confident driver.

Contact David on **07983 815226** or go to

www.woodlanddrivingschool.com

david@woodlanddrivingschool.com

www.facebook.com/woodlanddrivingschool/



Woodland Driving School – proud to be supporting Barnsley Hospice since 2021

SILKSTONE PHARMACY

3 High Street, Silkstone, Barnsley, S75 4JH
(Just opposite the church)



Opening times

*Mon- Fri- 8.30 am to *5.30 pm, Open until 6.00pm Wednesday*

FREE PRESCRIPTION COLLECTION AND DELIVERY SERVICE

* We contact your GP for you to order and pick up your prescriptions

* **FREE** Medication check-ups: discuss your medication with the pharmacist and get tips on how to get the most out of your medicines.

* **FREE** Prescription ordering and collection service from Penistone group practice, Barugh Green, Dodworth and any other local surgery.

* We look after your repeat slip *FREE Blood Pressure check.

* **CHEAP** private prescriptions. *FREE Travel advice.

We work with your doctors to provide the best possible health care.

Call: 01226 791838 or Fax: 01226 791008



Brush up on the Thrushes in your garden!

You will know the bird that goes back to tossing leaves in its quest for worms and other tasty creatures it may find nestling beneath the carpet of mulch. A member of the Thrush family.

It is a Blackbird!



ID tips – Males are all black with a yellow bill and ring around eyes, females and juveniles are all brown, with spots and streaks on the breast

‘The Blackbird’s name is something of a misnomer. As most of you will know, not all Blackbirds are black. The females and juveniles are a lovely deep brown, often with dark streaks and spots on their throat and breast. The all-dark male sports a bright yellow bill and is complemented by a striking yellow eye-ring’. RSPB

The Song Thrush



ID tips – smaller than a Blackbird, warm brown above with speckles on a creamy white breast

‘Famed and named for its characterful vocalisations, this thrush has a pretty impressive repertoire. Its distinctive song is made up of multiple parts, with each short phrase repeated two or three times before it bounds swiftly on to the next one’. RSPB

The Mistle Thrush



ID tips – larger than a Blackbird, cold greyish brown above with spots on a white breast

‘The similar, but larger to the Song Thrush, and somewhat ‘greyer’ looking the Mistle Thrush is unfortunately in serious decline and has been placed on the UK Birds of Conservation Concern Red List. Despite being our largest songbird, Mistle Thrushes are surprisingly easily overlooked’. RSPB

The Winter visitors

The Redwing



ID tips – slightly smaller than Song Thrush, dark brown above with red flanks and underwings, bright stripe above the eye.

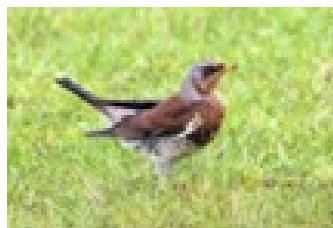
Redwings ‘Redwings are Song Thrush sized and are often found in sizeable flocks. These birds are highly nomadic and will move around the countryside in search of fruit-laden trees, bushes and shrubs’. RSPB

Making your own Christmas crackers?

Here are some jokes for you

- Why did Santa go to the podiatrist?
He had mistletoes.
- What do you call a snowman who works out?
An ab-dominal snowman.
- Why don't Santa's elves like to share?
They're elfish.
- What kind of bug hates Christmas?
A bah humbug.
- When is a boat just like snow?
When it's adrift.
- What do you give your parents for Christmas?
A list of everything you want.

Fieldfares



ID tips – larger than a Blackbird, they stand very upright and move forward with purposeful hops.

‘The Fieldfare is a large and striking bird. This chunky thrush has a grey head, lower-back and rump and chestnut upper-back and wings. Its tail is black and its heavily spotted breast sits on a warm ochre wash. A rather noisy bird, the loud and excited ‘chack-chack’ calls’ RSPB

Keep an eye out for the Thrushes in your garden!

Thank you RSPB for the above information, and watching over the bird life in the UK

Sue, Editor



Cartoon reproduced with the permission of Dave Coverly

Addergram Puzzle Date : 02-Dec-24

Clues	Answers
A type of music that often features quick rhymes (3)	
Trim (4)	
Spanish priest, informally (5)	
Extend over a large area (6)	
Reached for the stars (7)	
Velocity through the atmosphere, essential for flying (8)	
Lost hope (9)	
In many places or people (10)	

How to play Addergrams ...

Each word is an anagram of the previous word plus one extra letter. Use the clues together with the letters from the previous and next answers to solve each word.

Fresh puzzles available every day at : addergrams.com

There is no software to download or install, you don't need an account, no adverts are shown and no personal data is collected or stored. Addergrams is a fun daily word puzzle created by a retired Silkstone resident. Play Addergrams online and your result can be shared on social media if you wish. Addergrams copyright is owned by Mick Jennings, 2023. This puzzle is published with permission.

Feedback and comments to ...

info@addergrams.com

© 2023, Mick Jennings - Play more games online at ...

addergrams.com



Premier Foot Care

For the Professional Treatment of

Ingrowing Toe Nails	Athletes Foot
Callus	Diabetic Foot Care
Cracked Heels	Fungal Infection
Nail Trimming	Corns

Treatment in the Comfort
of Your Own Home!

Contact Emma
Tel: 07868 292460
Email: emmaclarkson@outlook.com

Emma Clarkson: SAC Dip FRFP, SAC Dip FRFP
Fully Insured

AromaHoliday "World of Scents"

Capturing the spirit of the World's best holiday destinations through scent.

Discover gorgeous Candles, Diffusers, Wax Melts, Washes, Lotions, and unique Gifts?

Store Now Open:

AromaHoliday
Pot House Hamlet, Silkstone,
S75 4JU.

Handmade in Yorkshire!

Mark Jordan (Founder)
AromaHoliday
T: +44 (0) 7882610705 E: sales@aromaholiday.com
<https://www.aromaholiday.com/>



Silkstone Parish - Then & Now

Over recent months Heritage Silkstone have had an on-going project to take photographs from the same place as some of the old photographs in the archives to show how the villages have changed over the years. The pairs of old and new photographs were displayed in church in September as part of National Heritage Week. It was lovely to see so many people visit the displays with some 'old Silkstonians' discussing how they remembered the villages, and those who have moved to the area interested to see how the villages used to look at the early to mid-part of last century.



The maps show the two villages in 1907. Silkstone village had cottages almost the full length of the High Street with a small cluster of cottages at Pot House. Silkstone Common had only a few houses around the cross roads and some terraced house along what is now Hall Royd Lane. The largest

group of houses were South Yorkshire Buildings which had been built to accommodate the railway workers.



The next two photographs were taken from the top of the Church Tower.



As with most of the old photographs in the archives there is no date to say when this was taken, however we can say that the first photograph is from the first half of last century as the building immediately left of Church Terrace is the old vicarage which was replaced by the current vicarage in the mid-1950s. The buildings at the other side of the road were called Chapel Yard. The only two buildings left standing are the two largest buildings which were both chapels. The one on the left is currently own by the Horsfield family and the one on the right is Cliff Nursery. The area behind the buildings surrounded by trees was at one time a quarry.

The number of buildings in Chapel Yard gradually reduced over the decades with the row of terrace houses on the right adjacent to the chapel being the last to be demolished in the mid-1960s when Martin Croft was built.

The second photograph is the view now. The Health Centre has replace most of Chapel Yard. Cliff nursery is just visible behind the trees on the right with the roofs of Martin Croft bungalows further back. The new vicarage can just be seen to the left of Church Terrace.

This next old photograph is again not dated but there is a series of photographs that formed a set made into postcards that are dated 1909 and titled 'School Feast Silkstone 1909'. Looking at the clothes and the large number of villagers gathered this photograph must date from the same period if not the same year.



The high wall behind the group of villagers is the estate wall of Noblethorpe Hall. The terrace houses to the right are Blacksmiths Row which is still there today. The row of three terrace houses that stand at the cross now were named the Poplars as there were large poplar trees opposite before the by-pass was built. Between the Poplars and Blacksmiths row there is a short section of the original estate wall.

Issue 104

The next photographs are taken on Moor End Lane looking towards Silkstone Common Crossroads; the railway bridge is just visible in the background. The house which can be seen clearly on the old photograph is called Lyndhurst is one of only two houses between South Yorkshire Buildings and the crossroads shown on the 1907 map, and the only one still standing.



The next photographs are of Silkstone Common Station.



The older one dates from around 1907, about 30 years after it was built. The platform on the left was for trains to Barnsley and on the right for trains to Penistone. Behind the water column on the left is a single track that led to a cattle loading dock. Passenger trains ceased in 1956 and goods trains nearly 4 years later.

This was last passenger train to use the station was in 1959.



Although the photographs are no longer on full display they are all available to view at Heritage Silkstone in the Brammah Gallery at the rear of the church (Silkstone). Heritage Silkstone opening hours are Wednesdays between 10am and 2 pm. A small selection of photographs are on a rotating display in the Bramamah Gallery which can also be viewed during the monthly Cutlers Café.

We hope to share more photographs in coming issues of the newsletter.

Roma & Allan Blower
Silkstone Heritage




C-MADE OUTDOORS
ACTIVITY CENTRE

Come and Adventure with us

AXE + KNIFE THROWING
ARCHERY
AIR RIFLE
CROSS BOW
BUSHCRAFT
NAVIGATION SKILLS
FOREST SKILLS
CAMPING - GLAMPING

GROUPS - BIRTHDAY PARTYS - CORPERATE -
STAG/HEN PARTYS

Follow us on Facebook @CMADEOutdoors
BroadcloseFarm
Team@C-MADELTD.Com



Broadclose Farm

Hot & Cold sandwiches
Icecreams – Milkshakes
Hot drinks
Freshly made cakes
Nomadic Pizzas
Locally produced honey
Home made jams



Cone Lane
Silkstone, S75 4LY.

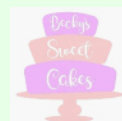
Opening Times

Monday to Friday 9:30am - 2:30pm
Weekends 8:30am - 1:30pm
Thurs & Friday 5:30pm - 8:30pm
Saturday evening 4:30pm - 8:30pm



Follow us on FB

The Pantry at Broadclose Farm/
CMADE Outdoors/
Becky's Sweet Cakes



Gardening with Matt B.

What a wonderful Autumn, some of the best weather of the year!

I write this article around Halloween, reminded that pruning of woody shrubs can be a topic which sends chills down many people's spine. However, some simple tips and background and all pruning gremlins will disappear.



There are a number of reasons why we should prune certain plants during winter. First and foremost, winter pruning reduces stress on the plant because it is the time of year where plants slow down or

become dormant. During winter plant sap recedes and slows, a cold weather coping mechanism (the reason deciduous trees lose their leaves), giving us opportunity to prune whilst causing minimal damage. It is also much easier to see the form and structure of deciduous shrubs when all those leaves have gone.

Apart from ensuring a shrub doesn't outgrow its space, winter pruning aims to keep the plant nice and healthy. A key principle of pruning is the 3 D's, Dead, Diseased and Damaged, the first aim being to remove any material falling into these categories. So anything that looks a bit dodgy, give it a snip, with nice sharp and clean secateurs.

The second aim of pruning is for plant form and to prevent the 3D's occurring. Here we should remove any crossing or rubbing

main branches, aiming for a nice open framework. Now depending on your shrub, and in particular if it has been shaped into a 'lollipop', this can be hard to achieve in a single hit. So, prune over several seasons to achieve the form you wish (the more natural the better in my opinion, most shrubs have little seen yet wonderful natural habit!).

A final reason to prune in winter is to increase vigour. It sounds contrary to prune a plant for faster growth, but you will find winter pruning, particularly hard pruning or '*renovation*' pruning of some species, means strong healthy growth next year.

When pruning, choose a point of the shrub where there are a pair of strong buds or nodules on the stem and cut slightly above this. By pruning back to these points each year, the shrub will grow two (or more) side shoots, and hence naturally divides, slowing the overall size, without the need to lollipop (for those botanically minded, you are removing apical bud dominance). Repeat this next year on the side shoots to encourage the shrub to bush out further. You will be rewarded with many more flowering stems (for flowering shrubs of course!) or at least a very healthy plant.

Some plants are best to avoid pruning during winter, for example any species which flower early in the year, these are best pruned after flowering. Additionally, *Prunus* species should be left until summer, to avoid silver leaf disease. A key element is to identify your plant before you

decide to prune it, so route out that book or plant app first.



Some extra resources on pruning;

<https://www.rhs.org.uk/advice/beginners-guide/pruning-plants/pruning-shrubs>

The RHS book 'Pruning & Training' by Christopher Brickell & David Joyce is an excellent guide for many plants.

MattB



The newly reformed Silkstone U11s Dynamos Football Club is more than just a

team – it's a testament to what can happen when people come together with a vision, a bit of grit, and a lot of heart'.

Emily Smith

Watch this space!



Local Walks - CARE

Here is the walk for this issue. It's a pleasant stroll, just under 4 miles, starting and ending at the Station Inn in Silkstone Common.

You can pull out the walk from the centre pages (17-20) or if you prefer, use a digital version on your phone. The digital version includes pictures of highlights, some text about the highlights and directions on screen and / or spoken.

If you want the digital version, you can find it at <https://www.komoot.com/tour/1803891288>.

The full list of walks is at

<https://www.komoot.com/user/silkstoneparishwalks/tours> – where we are a partner with Komoot. If you use Komoot, they include a free map of the larger local area when you sign up to a free account.

Please remember to follow Silkstone Parish Walks on Komoot – it helps by giving an idea of how much the Komoot app is being used. Any comments/ feedback, email us at silkstoneparishwalks@gmail.com

Enjoy

Steve Jones

Silkstone Parish Walks

Silkstone Common to Falthwaite



BARNSELY
Metropolitan Borough Council



Silkstone Parish Council

Walk Description

- A. This walk starts and finishes at the Station Inn Public house in Silkstone Common. Follow the road under the railway bridge.
- B. Turn right clown Cone Lane then bear up to the right up Beacon Hill.
- C. Continue towards the railway line, Turn right through the (monkey)* tunnel, then immediately left on the path leading to Hall Royd Lane.
- D. Pass Hall Royd farm, continue up to the Water House and turn right.
- E. Follow the road down the hill to Ben Bank Road. From here if you want to shorten the walk you can return to Silkstone Common by turning right at this junction.

For the longer walk proceed left towards Dodworth as far as Ben Bank Farm, turning along at the second footpath sign on the right.

- F. Go down the concreted lane, follow it to the left, then right over the stile and down the field to the dismantled railway track now the Dove Valley Trail (TPT). Cross the trail, into the small field on the other side and on to another track.
- G. Cross this track into the wood then follow the fence round to the right, round the edge of the wood and cross the footbridge. Follow the footpath towards the farm. Pass to the right of the farm following the yellow arrow waymarks to the road, turn left on the road.
- H. Walk as far as Falthwaite Grange Farm to look at its structure. Re-trace your steps back towards Silkstone Common, over House Carr Bridge up the hill to the footpath leading down the field to the right, almost opposite Dodworth Moor End.
- I. Follow the footpath down the field up through the wood, under the railway and turn left over the footbridge to Moorend Houses. Continue up the footpath by the Equestrian Centre and recreation ground to Ben Bank Road. Turn left here and back to the Station Inn PH.

Acknowledgements

C.Bower for the original route text.



General Information

Distance - 3 miles. Some sections can have wet, muddy or uneven ground and weather conditions can vary. Choose appropriate footwear and clothing.

Travel For bus and train times telephone Travel South Yorkshire on their Traveline number 0800 952 0002 open 7am to 7pm Monday to Friday and 8am to 7pm Saturday and Sunday

Or use their website <https://www.travelsouthyorkshire.com/>

Additional Information

On opposite sides of the turnpike road were two public houses. The Bonny Bunch of Roses (demolished in 2005) was built in 1813 by William Tattershall, son of George, on one side and the Station Inn was built in 1853, a year before the railway was opened. A public house stood there previous to that date, called the Junction.

Under the railway bridge, note where the original single track line of 1854, sometime later was widened to double-track so the bridge was widened also. Look for the masons marks on the stones.

Where the new houses stand on Beacon Hill a Victorian house stood. When it was being built in 1867 the remains of a beacon were discovered under the ground. Beacons were established in the 1800s to signal messages over long distances to give warning of invasion by an enemy.

A little way up Hall Royd Lane a high bank with old stone retaining wall marks the site of Hall Royd Colliery. Before 1802 the Common was open moorland but with the Enclosure Act in 1802 the land went into the ownership of local landowners.

The Water House. Silkstone Common's water supply comes from underground reservoirs behind the house. Water is pumped up to keep them filled and flows from there to all the houses in the area by gravity.

Down the hill to the main road which in the late 18th and early 19th Century was a toll road. A toll was charged at the gate built at the beginning of the then newly maid stretch of the road. The gates had spikes on top, to stop people on horseback leaping the gate. Hence the name 'turnpikes' from the revolving spikes.

The disused railway. Built in 1880 as a 'mineral' line to carry coal from South Yorkshire into Lancashire. The line was electrified in the 1950s and it was closed in 1982. The second and older disused railway was laid in 1852 and went as far as Moorend at Silkstone Common. It was built by the South Yorkshirc Railway Company to carry coal from the mines in the Moorend, Huskar and Old Sovereign Collieries.

Falthwaite Farm is a fine example of a Post and Truss building which can be examined from the roadside. Look for the Roman numerals on the wooden beams, marked to help in assembly on site.

The railway of 1852 stopped at the curving overgrown embankment to the east of the cottages, coal corning from Moorend Colliery. The pit-shaft was close to the terraced houses on the other side of the railway together with a 'day-hole' or drift which slopes downwards into the coal seam. Another day-hole into the same pit was flooded in 1838 and 26 children were drowned. There are Huskar Pit disaster memorials in Nabs Wood (Silkstone Common) and Silkstone Church.

Further Information

If you have any comments on this walk, encounter any difficulties en route or would like information on other walks in the Barnsley area including the Trans Pennine Trail then please contact The Rights of Way Team Tel: 01226 773355 or email publicrightsofway@barnsley.gov.uk



The Station Inn

Open all day Tuesday to Saturday
Sunday & Monday 12-8 pm

Fish & Chips Thursdays & Fridays

Traditional lunch on Sundays
(booking advisable)

Pensioners Luncheon Club Mondays 12-2

(new members welcome)

Private parties catered for

Buffets and hot meals

Walking and Cycling groups welcome

Dogs welcome

**Mark and Julie invite you to enjoy
good food & drink in your
comfortable local**

Tel: 01226 790248/07952 514219

2 Amazing Location 2 Fantastic Holiday Cottages for rent
Ideal for Families, Dog Friendly



The Cottage



The Old Post Office



Silkstone, South Yorkshire

Sleeps 2-4 | 3 bedrooms | Village Location

www.thecottagesilkstone.co.uk

Email: liz@thecottagesilkstone.co.uk

Bull Bay, Anglesey

Sleeps 4-6 | 3 bedrooms | Views across the sea

www.bullbaycottage.co.uk

liz@theoldpostofficebullbay.co.uk

Would You like to Be a Parish Councillor and Help to Make the Parish Of Silkstone a Better Place to Live?

There are currently 2 councillor vacancies on Silkstone Parish Council.

The council can now fill these vacancies by co-option, a process whereby the council considers applications from interested persons and can then select people to fill the seats.

We are looking for individuals with energy and passion, who want to make a positive difference and give back to their local community.

The work of a councillor can be extremely rewarding. If you are interested in becoming a parish councillor, please write to or email the parish council and include details of why you would like to apply, together with the skills and experience that you feel you would bring to the role.

If you wish to apply, require any further information about qualification for being a councillor, or just want more information about the role, please contact Richard Bell, Clerk to the Council, on silkstoneparishcouncil@gmail.com (address on page 27)

There is also a lot of useful information about councillors and the parish on our website: silkstoneparishcouncil.gov.uk



Have you ever visited the Huskar Community Rooms in Silkstone?

The Huskar Community Rooms were built in 2015 replacing the legacy Scout Hut behind the Asda in Silkstone; they are used by locals and folk from further afield.

All age groups are welcome, currently there are baby and toddler groups, dancing for young people, the Scouting movement as well as the Warm Welcome tea and friendship group, hosted by the Parish Council.

Children's parties or other get togethers are also welcome to hire the rooms.

The Charity that runs the Huskar Community Rooms is looking for new

Trustees and in particular a Chair of the group to help facilitate and work alongside other trustees to promote, grow and develop this valuable resource.

The role is a voluntary one, requiring a commitment of at least a couple of hours a month depending on your present availability and desire.

If you are interested in finding out more, please get in touch with the Clerk of the Council, Richard Bell on 07947 545504 or email at silkstoneparishcouncil@gmail.com

Vicar's Ramblings!

Familiarity breeds.....!

I realise that I am advancing in years because I find myself quoting my parents more and more during sermons. Even though they are long gone I can hear their voice (particularly my mother's tone of voice!) in my head when confronted with certain situations.

I ought to apologise to my congregations as they hear me too often say, *'my mother used to say...'* and I see a wry smile come across their face. In all reality they are probably empathising with me as they recall the words of wisdom given to them by a past generation.

As I write this we are on the threshold of November, a month which is given up to a time of remembrance. In the Church we spend time giving thanks for those in the past ages who's lives and actions shaped our present.

All Saints' day is nearly upon us and for two of my churches, who are dedicated to All Saints', we will in effect be celebrating our patronal festival.

The great day of national and international remembrance will again find us stopping for the two minutes silence as a tribute to those who made the ultimate sacrifice. We will hear familiar music, words and see the everywhere the iconic image of a poppy.

I once got myself in really hot water by resisting the suggestion that the ceremony

of remembrance should change (this was not in the West Barnsley churches!). Strong voices were heard promoting a change in the hymns, words and ceremonies associated with Remembrance Sunday. I stood against the change as I felt strongly that the familiar words always land afresh on our ears and hearts. This familiarity brings a comfort of its own as we grapple with the pain of loss and in the face of a fragile world peace.

Don't get me wrong, I am not against change, as many of my congregation will attest! Perhaps I can hear my mother changing the old proverb, *'Familiarity breeds contempt'* to, *'Familiarity breeds COMFORT'*. I hope we have all taken comfort from the familiarity of remembrance in the face of an ever changing world.

Advent and Christmas will be upon us also and this again is a time for familiarity of custom in church and community. I hope you will be able to come to some of our services over the season and wonder again at the old story coming afresh to us again.

As my mother would often say to me, *'Think on!'*

Blessings

Canon Keith

Maria Penrose
DANCE Studios



BALLET

TAP

MODERN JAZZ

THEATRE CRAFT

MELODY BEAR

MINI MOVERS

STREET

MUSICAL THEATRE

CONTEMPORARY

IRISH

GYMNASTICS

ADULT CLASSES

COMPETITIONS

SHOWS

Summer Dance Camp

EXAMINATIONS

drama

Private tuition

singing

Swing time tappers 50+ years.



MPDS

Principle: Maria Penrose – Est: 1994 in Silkstone

Tel: 07966 445679 Email: maria@mariapenrose.co.uk

Fully Qualified in
Nails Brows Lashlift Facials



Tel. 07817334162



mels_gels123



@melsgelsbeauty



TEMPLESPA
Consultant

www.templespa.com/melbeever

Useful Contact Details

Parish Councillors

Chair of the Council - Meryl Liddell

Silkstone Common Tel: 790509

meryl.liddell@btinternet.com

Richard Leech (Vice Chair)

Silkstone Tel: 01226 791679

cllrleech@silkstoneparishcouncil.gov.uk

Debra Smith

Silkstone Common Tel: 07443-221784

jd@jdblackhorse.me.uk

Derek Liddell

Silkstone Common Tel: 01226 790509

derek.liddell@btinternet.com

Janice Wake

Silkstone Tel: 07540 957639

janicewake@btinternet.com

Jim Logan

Silkstone Tel: 07952 346446

stephenjameslogan@yahoo.com

Peter Millar

Silkstone Common Tel: 07970118679

pmsilkstone@gmail.com

Contact the Clerk

Silkstone Clerk and Responsible Finance Officer

Mr Richard Bell

8 The Meadows

Silkstone Common

S75 4SG

Tel : 07947545504

Email:

silkstoneparishcouncil@gmail.com

Parish Council Meeting dates for Jan 2025 - Apr 2025

PC meetings are advertised in both village notice boards and on the website. They are held on the first Monday in the month in Silkstone Sports Pavilion unless stated otherwise.

Dates for the next four months are:

Date	Meeting
2025	
6th Jan	PC
3rd Feb	PC
3rd Mar	PC
7th Apr	PC
14st Apr	Annual Parishoners Meeting Methodist Chapel
12th May	Annual Council meeting



Contact details for Ward councillors and MP

Ward Councillors

Robert Barnard:

CLlrRobertBarnard@barnsley.gov.uk

Telephone: 01226 770770 (BMBC) or 01226 382861 (Home) or 07811 430948 (mobile)

Dr Alex Burnett:

CLlralexburnett@barnsley.gov.uk

Telephone: 01226 770770 (BMBC) or 01226 772560 (work)

John Roberts

Email: cllrjohnroberts@barnsley.gov.uk

Telephone: 01226 770770 (BMBC) 01226 774486 (work)

The postal address for all three is the office address: Barnsley MBC, P O Box 634, BARNSELY S70 9GG

MP

MP Dr Marie Tidball

marie.tidball.mp@parliament.uk

<https://www.marietidball.com/>

Newsletter deadlines and dates

Articles, events and adverts

If you:

- have a news item for the next issue
- want to update details for your organisation,
- advertise or amend an existing advert

please email Sue on sue@8highstreet.co.uk

The deadline for the next newsletter is Friday 28th February 2025.

Our usual deadlines and distribution dates are below:

Deadline for articles	Distribution dates
Last week of February	Last week in March
Last week of May	Last week in June
First week of August	Last week in September
Last week of October	First week in December

Views expressed in in this Newsletter are those of the Contributors and not necessarily the views of the Parish Council.

Parish Council website and Facebook page

www.silkstoneparishcouncil.gov.uk

<https://www.facebook.com/SilkstoneParishCouncil>

If you are a local society or business you can ask to be listed and described on the website with a link to your own website if you have one. You can find all publicly available documents on the website. If you do not have internet access and would like to view anything from our paper files please contact the Parish Clerk. The Parish Clerk is also the contact for the Facebook page



The Red Lion

A traditional village pub
in the heart of Yorkshire
Open from 12 Daily

Real ales
Ideal for walkers
Quiz, Pool,
Dog friendly
Community pub
Children's play
area



Functions
catered for
Darts
Free WI-FI
Beer Garden
Friendly service

WHATEVER YOUR REASON TO STOP BY AND SEE US,
WE WILL BE HAPPY TO SEE YOU AND YOU CAN BE
ASSURED WE WILL LOOK AFTER YOU.

The Red Lion, 69 High Street, Silkstone,
Barnsley, South Yorkshire, S75 4JR Tel: 01226 790455



HORSFIELDS NURSERY

Horsfields Nursery
Pot House Hamlet
Silkstone
Barnsley
South Yorkshire
S75 4JU

Beautiful plants in a beautiful place
Open seven days a week

01226 790 441
www.horsfieldsnursery.co.uk

Addergram Solution : 02-Dec-24

Clues Answers

A type of music that often features quick rhymes (3)	R	A	P							
Trim (4)	P	A	R	E						
Spanish priest, informally (5)	P	A	D	R	E					
Extend over a large area (6)	S	P	R	E	A	D				
Reached for the stars (7)	A	S	P	I	R	E	D			
Velocity through the atmosphere, essential for flying (8)	A	I	R	S	P	E	E	D		
Lost hope (9)	D	E	S	P	A	I	R	E	D	
In many places or people (10)	W	I	D	E	S	P	R	E	A	D

P	A	R	E
---	---	---	---

P	A	D	R	E
---	---	---	---	---

S	P	R	E	A	D
---	---	---	---	---	---

A	S	P	I	R	E	D
---	---	---	---	---	---	---

A	I	R	S	P	E	D
---	---	---	---	---	---	---

D	E	S	P	A	I	R	E	D
---	---	---	---	---	---	---	---	---

W	I	D	E	S	P	R	E	A	D
---	---	---	---	---	---	---	---	---	---

Fresh puzzles available every day at : addergrams.com

There is no software to download or install, you don't need an account, no adverts are shown and no personal data is collected or stored.

Addergams is a fun daily word puzzle created by a retired Silkstone resident.

Play Addergrams online and your result can be shared on social media if you wish.

Addergrams copyright is owned by Mick Jennings, 2023. This puzzle is published with permission.

Feedback and comments to ... info@addergrams.com

info@addergrams.com

© 2023, Mick Jennings - Play more games online at ... addergrams.com

addergrams.com

Chocolate Truffle Torte

Ingredients

Base

- 8 oz Digestive biscuits
- 1 oz sugar
- 4 oz butter or margarine

Truffle

- 1 pint double cream
- 8 oz milk chocolate
- 8 oz dark chocolate
- Cocoa for dusting

Method

1. Line a 10 inch diameter, 1.5 inch deep flan dish with foil so that ends are available to lift the finished cake out of the dish
2. Place the digestive biscuits in a sandwich bag and crush with a rolling pin, or place in a blender to crush
3. Melt the butter in a pan, remove from heat and stir in sugar and biscuit crumbs
4. Press into the bottom of the flan dish and place in the refrigerator
5. Whip cream so it stands up in peaks
6. Break chocolate into a heat proof bowl



7. Place the bowl over a saucepan of simmering water, ensuring the water is not high enough to get into the chocolate
8. Melt stirring continuously
9. Fold the cream into the chocolate until well incorporated
10. Spread the chocolate truffle mixture over the biscuit base
11. Return to the refrigerator for at least 2 hours, can be left overnight for a very firm truffle
12. Sieve over cocoa powder and serve small slices.

It's very rich so a little goes a long way

Alison Marsh



Insects in winter

Most species enter a dormant phase. This can be as an egg, larva, pupa or adult insect, dependent upon species. The majority of butterflies and moths overwinter in the larval stage, with pupae being the next most common choice, followed by eggs and adults.

Here are two you might see.

Winter Moth

The winter moth (*Operophtera brumata*) is a common moth in the UK that can be seen in winter:



Appearance

Male winter moths are broad, pale brown or greyish with a darker band across their forewings. Females are dark grey with stubby wings and cannot fly.

When to see them

Winter moths are active from late autumn through to late January or February. They are often seen flying at night and attracted to lights, such as car headlights.

How to help moths

You can help moths in your garden by:

- Not pruning hedges too heavily
- Leaving some parts of the hedge unpruned each year
- Providing shelter for adult moths and caterpillars with ivy growing up trees or walls

Winter Gnat

Winter gnats, also known as winter craneflies, are small, long-legged flies that are active during the winter:



Appearance

Winter gnats are 6–10 mm long with long, thin legs, banded abdomens, and unmarked wings.

Behaviour

Winter gnats are one of the few insects that are active in the winter. They perform a courtship dance called lekking, where males gather together in a group and fly up and down in a competitive display to attract females.

Winter gnats feed on nectar and are not interested in biting humans.

When to see them

Winter gnats are most commonly seen from late autumn to early spring.

And Another! The Red Admiral

Due to climate change, more Red Admirals are now choosing to stay in the UK during the winter.



Unlike other butterflies, these become active if it gets warm.

Linda Marsh

EAR TO YOU

Mobile Ear irrigation and wax removal

I offer a mobile service to your home

- No waiting lists
- Quick to be seen
- Fair prices
- Fully Qualified-National Ear diploma
- Fully Insured and ready to help you all
- £30 One ear
- £40 Two ears
- No hidden cost

Call me on 07715 957177



 Find us on Facebook



PAW PRINT PETS DOG WALKING & PET SERVICES

Dog Walking ~ Pet Drop-Ins ~ Pet Sitting

- ✓ Insured
- ✓ DBS Checked
- ✓ Fully Qualified
- ✓ Canine First Aid Trained

★★★★★

Hi, I'm Corinne 😊


I'm a professional dog walker from Silkstone offering solo and small group walks to suit yours and your dog's needs. I love the outdoors and going on adventures so your dog is sure to have a fun time!


I also do drop-ins and pet sits to keep your pet happy in their home when you can't be there. I pride myself in giving the best care possible for your pets.

Get in touch:

 07484653702

 pawprint-pets@hotmail.com

 @pawprintpets_barnsley

 Paw Print Pets - Barnsley

Meet & Greet is
Free



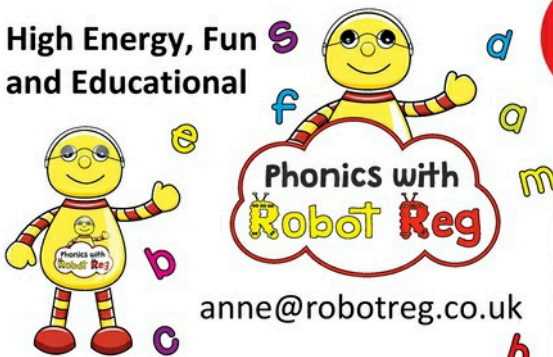
Services for Christmas across the benefice of West Barnsley.

- All Saints' Silkstone Sunday 22 December – Tradition Carol Service 6pm
- All Saints Silkstone Christmas Eve – Crib Service for families and all ages – 4pm
- Christmas Eve Midnight Mass 11.30pm will be held at St John the Baptist Church, Dodworth
- Christmas Day Service will be held at Cawthorne Church 10am

Look out on Social Media and notice boards for other services and events in the run up to Christmas



**High Energy, Fun
and Educational**



anne@robotreg.co.uk

**South
Yorkshire
West**

For ages 1-5



facebook.com/SoundsRightPhonicsSouthYorkshireWest

www.robotreg.co.uk

Wonderful Yorkshire Crafts Fair

Which took place 1-3 November 2024 at All Saints Church, Silkstone

A wonderful celebration of Yorkshire’s crafts, with a cup of tea/coffee and tasty cakes.

Canon Keith spotted here enjoying chatting with his parishioners.



It’s beginning to look a lot like Christmas! 🎵 🎵





Alisha Faith Interiors Ltd



Beautifully Bespoke Interior Design Services

Design Studio, The Bungalow,
Coltfield, Birdwell, Barnsley, S70 5RH

t: 01226 416490

e: enquiries@alishafaithinteriors.co.uk

www.alishafaithinteriors.co.uk

SILKSTONE COMMON TEAROOM

Tea, coffee, hot
chocolate, homemade
bakes & cakes, come
and catch up with
friends of the
community ☺

Fortnightly



Everyone welcome 🤗

10.00-12.00



Dates are:

December 12th

Jan 9th & 23rd

Feb 6th & 20th

March 6th & 20th



Local Organisations

General

Silkstone Common Good Companions

Provides companionship, entertainment and recreation for people aged 55+ who live locally. Meets fortnightly on Wednesdays 2-4pm in the Methodist Church Hall. New members are very welcome. Varied programme including speakers, trips and entertainers. Younger helpers urgently required. Annual subscription £20. For more information contact Bev Almond on 07502303470 or email bjalmond@hotmail.co.uk

Silkstone Luncheon Club for the over 60s

Meets every Monday at 12 o'clock in the The Station Inn, Silkstone Common. New members always welcome. Please call Stuart Moody Chairman 01226 49683 Or Stuart Jubb Secretary & Treasurer 01226 790704

Stainbrough Rotary are the local Rotary covering the Parish.

We meet every Thursday at The Fairway Hotel, Dodworth at 7.30 pm. For details contact the Club Secretary , Ian Whittle 01484 3153386 or stainboroughrotary@gmail.com

Neighbourhood Watch

Janice Wake, Neighbourhood Watch Area Coordinator
janicewake@btinternet.com
07540957639

Silkstone Common Methodist Church

Currently closed for worship. Open for community use.

Silkstone - St Florent Twinning Organisation

Contact Elizabeth Waterlow
email liz.waterlow@hotmail.co.uk
tel 07986264481

Tuesday Group

We meet in the Methodist Chapel, Ben Bank Road, Silkstone Common, every week on Tuesday 2 o'clock - 4.

Some of us enjoy doing crafts, such as sewing & knitting but others love to come for a cuppa , cake and a good old natter. Everyone is welcome.

Please just turn up or you can contact Mary (07942894029) for more information.

Silkstone/Silkstone Common Village News and Community Group

Facebook community group for locals
<https://www.facebook.com/groups/860075201163623>

New Swaine WI

Meet on 3rd Thursday of each month at 7.15pm in Hoylandswaine Village Hall and at additional times throughout the month. Contact:

Newswainewi@outlook.com or Julie Dyson (Secretary) on 07791379767

Silkstone Bell Ringers

We welcome visiting bands and can arrange ringing for weddings and other special occasions. Would you be interested in learning to ring or are you experienced and willing to help
Contact: Mrs J Jennings 01226790080
juliajennings27@gmail.com

Local Organisations

Sports/Activities

Silkstone United FC

DJ Walker 07730 039599

Yorkshire Regional Talent Centre

Under 6's – U 16's Contact Steve Fletcher
07990 805694

Silkstone United Cricket Club

Main Sponsor : Norcroft Electrical Ltd
Associate Sponsors : Barnsley Timber
Merchants, John Whitmore Electrical
Contractors, Plascompo Ltd

Contacts:

Junior Co-ordinator – Lee Willford 07931
298213 - lee.willford@gmail.com

SUCC Senior / Main Contact – Kevin Taylor
07462 877416

kevin.taylor@plascompo.com

Website : www.silkstoneutd.play-cricket.com

Facebook : [Silkstone UTD C.C.](https://www.facebook.com/SilkstoneUTD)

Twitter : @SilkstoneCC

Silkstone Common Sports & Recreation Association

Secretary - Michael Winder
Tel - 07719392775
snappylad@outlook.com

Rising Sun Martial Arts

Karate / Kickboxing Thursday
6:00pm - 7:00pm (Children & Adults)
Silkstone Common Methodist Church Hall,
Ben Bank Road, S75 4PA
Chief Instructor: Master M.T. Middleton
Tel: 07904 700786
Web: www.risingsunmartialarts.co.uk

Barnsley BSAC Divers

Meets every Tuesday 7:30 onwards in the
Boardroom at the Metrodome.

Contact: Dave on 07783 291955 or visit the
website

www.barnsleybsacdivers.co.uk

Pilates, Power Pilates and Yoga

Silkstone Common Methodist Church

Tuesdays

Pilates 5.20-6.20 pm & 6.25-7.25 pm

Yoga Flow 7.30-8.30 pm

Thursdays

Power Pilates 7.15-8.15 pm

Contact (to book) Tracy (Fitness for all)
07398 238691

Music

Old Silkstone Band

Rehearsals - Silkstone Common Methodist
Church. Sunday 7pm - 9pm, Wednesday
8pm - 10pm

Contact - Secretary Danni Brookes 07540
240703

Email oldsilkstoneband@outlook.com

Web site www.oldsilkstoneband.com

Facebook [Old Silkstone Band](https://www.facebook.com/OldSilkstoneBand)

X (Twitter) @OldSilkstone

Instagram [old_silkstone_band](https://www.instagram.com/old_silkstone_band)

TikTok @oldsilkstoneband

Millhouse Green Male Voice Choir.

Practice night is Mondays in Millhouse
Green Institute at 7.30. Secretary: Richard
Craven 07895 555113

Email: mgmvc@hotmail.co.uk

Web site www.mgmvc.co.uk

Local Organisations

Children

Silkstone Pre-School Playgroup Ltd

Ofsted registered offering Full Day Care, Sessional Care, Wrap around Care for children up to 11 years. Open Mon-Fri 7.30am to 4:30 pm

Email silkstonepreschoolpg@gmail.com

Shining Stars Out of School Club

We cater for children aged 4 – 11 years and provide high quality, affordable, reliable and accessible childcare from 7.30am to 9am and from 3.30pm to 6pm during term time.

Contact: email at

shiningstars@silkstoneprimary.com

phone on 07591630348

Shake Rattle and Roll Children's Music Group

From babies up to pre-school children are welcome at our friendly group. Please also bring along mum, dad or carer to join in an hour of engaging musical fun, action and rhyme. We meet every Friday during term time at 10am in Silkstone Common Methodist Church. Refreshments for adults and children are provided. Attend just when you like. No booking or commitments.

Find out more

<http://www.facebook.com/srrmusicgroup>

Contact: srrmusicgroup@gmail.com

Tracy 07905 421015



29th Barnsley (Silkstone) Scout Group: Huskar Community Rooms

Monday Scouts 19:00 - 20:30
Aged 10 - 14

Tuesday Cubs 18:30 - 19:30
Aged 8 - 10

Wednesday Beavers 18:30 - 19:30
Aged 6 - 8

All queries and membership to the Group Scout Leader

rob.flewitt@barnsleyscouts.org.uk

Childminders

For details of registered childminders please ring Families Information Service on: 0800 034 5340.

Schools

Silkstone Common Junior & Infant School

Moorend Lane, Silkstone Common. Educates children 4-11 yrs. The school is interested in developing the use of the school outside normal school hours.

Contact: Mr Simon Tabbner 790471

Visit

<http://www.silkstonecommonji.co.uk/>

Silkstone Primary School

Educates children 4-11 yrs. The school is interested in developing the use of the school outside normal school hours.

Contact: Ms Sally Adams 790333

Visit <http://silkstoneprimary.com/>

Are your group's details correct?

If not please let the Editor know. sue@8highstreet.co.uk

Local Organisations

Environment & Local History

Silkstone CARE Group

Caring for and improving our natural environment by planting hedges, trees, shrubs and bulbs, clearing paths, litter-picking plus other activities. Tools available on free loan for environmental projects.

Contact:

Susan Dunwell 07973 310925

susanwareham@talktalk.net

Karen Gorman 07788 185502

kgorman963@btinternet.com

Linda Marsh 07792321829

lmxx.13@gmail.com

Roggins Local History Group (Silkstone)

We collect, preserve and share photographs, stories and memories of Silkstone, Silkstone Common and the surrounding areas

Contact: Andy Horsfield

email rogginshistorygroup@gmail.com

01226 791929

Heritage Silkstone

Local and family history on your doorstep. We meet in Silkstone church every Wednesday between 10am to 2pm. AND **Cutler Cafe** on the last Saturday of every month between 10 am to 12 noon.

Website address

www.heritagesilkstone.co.uk . Facebook page [Heritage Silkstone](#).

Contact:

Jane Raistrick, secretary, 01484 868254

Churches - The Benefice of West Barnsley

All Saints' and St James the Greater Silkstone with Stainborough 9.15 am 2nd and 4th Sundays in the month. Messy Church 4th Sunday in the month 4-6pm.

St John the Evangelist, Hoylandswaine 11.00am 2nd and 4th Sundays

St John the Baptist, Dodworth 9.15am 1st and 3rd Sundays. Holy Communion Service every Thursday 9.30am followed by a Coffee Morning

All Saints' Cawthorne 11.00am 1st and 3rd Sunday. Last Tuesday in the month 10.00am Holy Communion service

Benefice website:

<http://www.beneficewestbarnsley.org.uk>

Vicar: Rev Canon Keith Farrow DL
The Vicarage, 12 High Street
Silkstone, S75 4JN

Telephone: 01226 492294

For enquiries about Weddings, funerals and general enquiries please contact the Benefice Administor:

Mrs Loraine Wills

Email

beneficewestbarnsley@hotmail.com

Mob: 07973 381131

For Baptism enquiries contact the Benefice Baptism Coordinator:

Mrs Lynn Wilkinson